



**SERVICOM**  
P A C I F I C  
Specialists in printing technology

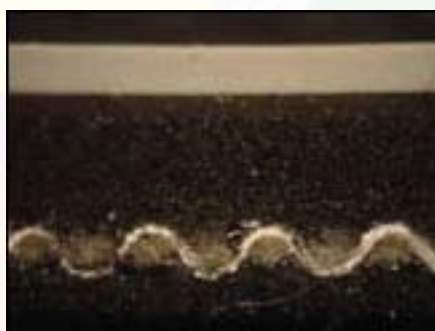
# PLASTIC 665 CAST FACE - SP189

Manufactured by **Printec** and converted by Servicom Pacific

## Application

665 Cast is used for printing in all plastic substrates in dry offset machines, polytype and VamDam.

This blanket offers high resistance due to its carboxyl top surface and high compressibility.



## Technical Data

Colour	Grey
Surface	Cast
Thickness	1.96 mm/0,0771 to 0,0787 inches
Hardness	65 Shore A
Elongation (1000N / 50mm)	2% Max
Compressibility	40-70 Mpa



Head Office - NSW: Phone: +61 (0)2 9894 5466 Fax: +61 (0)2 9894 5823  
QLD: Phone: +61 (0)4 0070 8202 Fax: +61 (0) 7 5519 9655 VIC: Phone: +61 (0)4 3940 0858 Fax: +61 (0)3 9467 8848  
New Zealand: Phone: +64 (0)9 533 4492 Fax: +64 (0)9 533 4491 Web: [www.servicomnz.co.nz](http://www.servicomnz.co.nz)

[www.servicompacific.com.au](http://www.servicompacific.com.au)